

Study on Ovitrap Surveillance and Molecular Phylogeny of Dengue Vectors (*Aedes aegypti* and *Aedes albopictus*) based on Cytochrome C Oxidase Subunit I (COI) Genes from Different Habitat Types of North Eastern, India

Himadri Borah*, DS Bora

Department of Life Sciences, Dibrugarh University, Dibrugarh, Assam, INDIA.

Submission Date: 04-03-2023; Revision Date: 12-04-2023; Accepted Date: 25-04-2023.

ABSTRACT

Background: Larval surveillance plays crucial role in monitoring dengue vector surveillance. Conventional container indices is cumbersome in monitoring vector abundance and risk of transmission. So, ovitrap surveillance and molecular phylogeny study was conducted. **Materials and Methods:** Ovitrap surveillance was carried using different ovitrap indices which were correlated with environmental parameters. Phylogeny study was carried out using mtCOI genes as morphological characterization of mosquitoes does not give accuracy in characterizing closely related species. **Results:** Findings revealed that *Aedes albopictus* was dominant over *Aedes aegypti* in ovitrap placement locations. Temperature, rainfall and habitat types serve as major factors contributing to variations in ovitrap indices. Molecular phylogeny studies showed that the isolates formed distinct groups separated into clusters and the sequence diversity of mt COI genes in *Aedes* mosquito species revealed biogeographical impact. **Conclusion:** The study helps in measuring the population status of dengue vector abundance, forecasting dengue outbreaks that can serve as a powerful tool to adopt different control measures.

Keywords: *Aedes* spp., Population, Environmental parameters, Water quality.

Correspondence:

Himadri Borah,
Department of Life
Sciences, Dibrugarh
University, Dibrugarh,
Assam-786004, INDIA.

Email: himadriborah92@gmail.com

INTRODUCTION

The dengue fever caused by *Aedes* vectors both *A. aegypti* and *A. albopictus* has been continuously spreading in tropical and subtropical regions of the globe, causing illness and fatality.^[1] In India, most of the districts and cities are endemic to dengue infection.^[2] It was considered as major public health problem in India because of its high morbidity and mortality. Urbanization, population movement and lacunae of public health measures are

the major cause of increasing dengue positive cases.^[3-7] Vector surveillance is the only option to determine the vector abundance, vector habitats, and spatiotemporal risk factors with respect to dengue transmission.^[8] In most of the countries, vector surveillance relies on larval surveillance.^[9] In India, the house index (the percentage of houses positive with larvae or pupae), container index (the percentage of positive water filled containers infested with larvae or pupae) and Breteau index (the number of positive containers for *Aedes* vector per 100 houses inspected) are the main indices which have been used as indicators for risk of dengue transmission.^[10-12] But sometimes *Aedes* indices prove to be incapable of determining vector abundance and transmission risk as, *Aedes* mosquito vectorial capacity varies by region, and the diagnostic techniques are inadequate and also the situation is made more difficult by the broad size

SCAN QR CODE TO VIEW ONLINE



www.ajbls.com

DOI: 10.5530/ajbls.2023.12.21

and regional differences in socioeconomic conditions.^[9,13] For better understanding of population dynamics and distribution of dengue vectors for prevention and control, the ovitrap surveillance method is used to supplement the data of long term container search method.^[9] Ovitrap based surveillance was employed in many Asian countries like Hong Kong, Singapore, and Australia in routine dengue surveillance.^[14,14-16] This technique helps to find both young mosquitoes and the eggs laid by gravid female mosquitoes.^[17,18]

In this present communication, indices based on ovitrap surveillance, namely the positive Ovitrap Index (OI; total no. of positive ovitrap/ total no. of ovitrap placed), Trap Positivity Index (TPI; Total no. of positive egg sheets/ total no. of egg sheets installed in each ovitraps) were calculated to correlate. Additionally, molecular phylogeny was studied to obtain the evolutionary relatedness among the dengue vectors of study sites with the global isolates. The aim of the study was to develop effective vector surveillance strategies to improve the data collection efficiency and to determine dengue risk zones in a short period of time and less cumbersome way to provide effective vector control measures.

MATERIALS AND METHODS

Study areas and ovitrap surveillance

Ovitrap survey was conducted in housing areas of four different habitat types of Dibrugarh (27.4705° N, 94.9125° E) and Tinsukia (27.4886° N, 95.3558° E) district of upper Brahmaputra valley of Assam on a fortnightly basis for a period of one year (2019-2020). In order to remove sampling bias, the ovitrap survey was also conducted in four different dengue endemic habitats of Guwahati, Assam which comes under lower Brahmaputra valley of Assam, India. The ovitrap used was a black plastic container of average sizes (18x11cm). The inner walls of ovitraps were lined with Whitman filter paper of size 190 mm. Two-thirds of the ovitrap was filled with water and filter papers covering the inside were dipped into water to act as a female *Aedes* oviposition site. In each household of all the study sites, the ovitraps were placed in three different consecutive heights (3^{ft}, 6^{ft} and 12^{ft}) in a shady place near dwelling houses. Thus, a total of 240 ovitraps were installed in all the study sites. Each ovitrap was marked with a serial number, date and study sites. Global Positioning System coordinates (Garmin eTrex 10x) was used to record the coordinates of study sites (Plate 1).

Mosquito collection and rearing

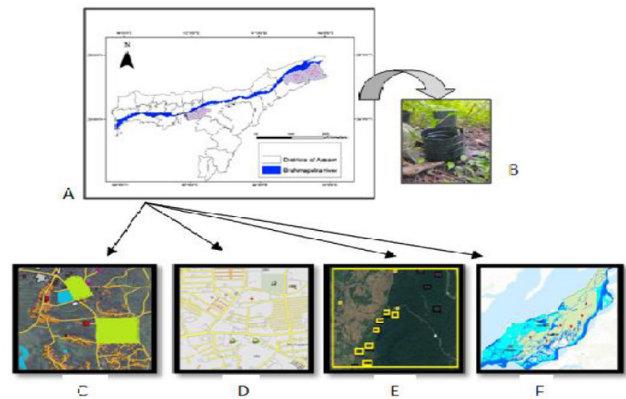


Plate 1: Google earth map showing dengue vector ovitrap surveillance in different selected locations of both Dibrugarh (27.47° N to 94.91° E) and Tinsukia (27.48° N to 95.36° E) districts of upper Brahmaputra valley of Assam, India. (A) Represent study areas in map of Assam, (B) solid black ovitraps installed at households, (C) Tea-estates areas, (D) industrial areas, (E) Forest areas, (F) riverside areas respectively.

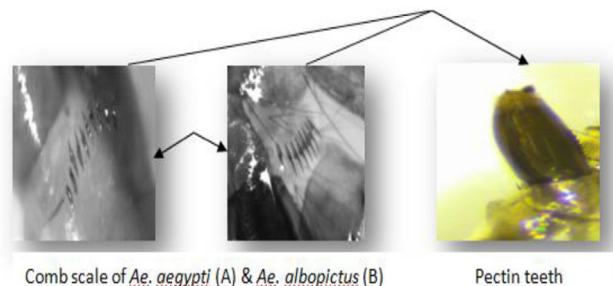


Figure 1: *Aedes* mosquito's larval identification of Microscopic image (10x) of larvae showing differences in morphological structure of comb scales on the eighth segment of the abdomen and the shape of the pectin teeth on the siphon.

From the ovitraps, all the immatures, larvae, pupae and eggs sheets were collected two times in an interval of 15 days per month from all the study sites and brought to the entomology laboratory. All immatures collected from the ovitrap were counted, identified and reared for adult emergence for species identification. Two vector indices used in this study, namely, OI(Ovitrap index) and TRP(Trap positivity index) were determined for all the study sites.

Morphological identification

The larvae collected from ovitraps placed at different sampling sites were identified using morphological characteristics such as pectin teeth and comb scale, and the adults reared from larvae were identified using standard keys (Figure 1).^[19]

Molecular Identification

Adult specimens after morphological identification were identified as *A. aegypti* and *A. albopictus* by observing morphological characteristics. After that individual adults from different sampling areas were selected for molecular characterization to study the molecular variations.

Genomic and mitochondrial DNA extraction

Whole DNA was extracted from individual laboratory reared adult mosquito by DNeasy® Blood and Tissue Kit (QIAGEN, USA) according to standard protocol. Isolated DNA was eluted with supplied elution buffer and sent to the Heredity Biosciences Labs Pvt. Ltd., Odisha, India for gene sequence analysis. Statistical analyses were done using SPSS version 22.

RESULTS

During the survey period from 2019–2020, the study areas had an average temperature of 23.7°C (max: 24.8°C and min: 22.8°C). Monthly average precipitation was 167.76 mm, with February and December recorded as the driest month (0.2 mm) and June, July and August, the wettest months (483.2 mm) (Figure 2A).

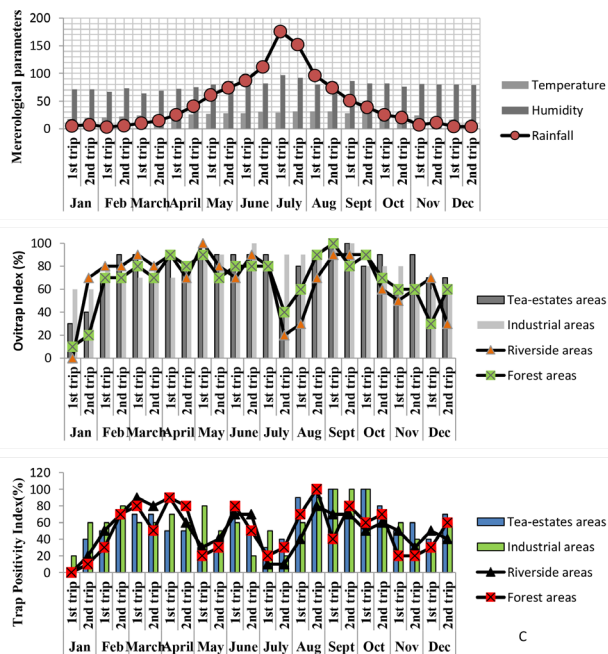


Figure 2: Aedes vector indices of ovitraps installed at different habitat types in Dibrugarh and Tinsukia district of Upper Brahmaputra valley of Assam, Northeast India with respect to meteorological parameters (A) month wise temperature, rainfall and humidity, (B) Ovitrap Index (%), (C) Trap positivity index (%).

Dengue vector abundance

A total of 65,283 *Aedes* spp. eggs were collected throughout the collection period from all the habitat types. And a total of 81,084 immature mosquitoes were collected from the ovitraps. Mostly two dengue vectors were collected from the ovitraps, namely *A. aegypti* and *A. albopictus*, from all the study sites. *A. albopictus* was predominantly found in all the habitat type with the majority in tea-estates areas (18707) and industrial areas (19552). Likewise, the abundance of *A. aegypti* was the maximum in industrial areas (4133) followed by tea-estates (3352), riverside areas (3,029) and forest areas (2,175) (Table 1). The study on seasonal variation of ovitrap index of different study sites revealed that in winter season, the highest positive ovitrap index was recorded from industrial areas with an OI of (65±1.41) followed by tea-estates, flood plain riverside and forest areas with an OI of 61.66±3.09, 55±3.35 and 43.33±1.85 respectively. In pre-monsoon season the highest OI was recorded from tea-estates followed by floodplain riverside with an OI of 85±3.41, industrial, and forest areas with an OI of 85±3.41 and 85±1.28 respectively. Both industrial and forest areas were recorded with the same OI with an index of 80±3.65. In monsoon season, again, similar trend was found as winter season, the highest OI was found in industrial areas followed by tea-estates, forest and floodplain riverside areas with an OI of 88.33±3.07, 80±2.16, 71.66±1.49 and 60±1.54. In post-monsoon seasons, the highest OI was found in tea-estates areas followed by industrial, forest and flood-plain riverside areas with an OI of 86.66±2.14, 83.33±1.14, 76.66±2.66 and 73.33±1.60 respectively. Seasonal variation of ovitrap index of all the study areas showed significant difference. From the study of TPI, it was found that in winter season, the highest TPI was found in industrial areas with TPI of 51.66±2.09 followed by tea-estates, flood-plain riverside and forest areas with TPI of 45±1.56, 38.33±1.13 and 33.33±1.15 respectively. In pre-monsoon season, floodplain riverside areas was found to have the highest TPI followed by tea-estates, forest areas and industrial

Table 1: Abundance of dengue vectors (<i>A. aegypti</i> and <i>A. albopictus</i>) that collected from each ovitrap placements in different habitat types.		
Ovitrap placement habitats	Percentage of species abundance	
	<i>A. aegypti</i>	<i>A. albopictus</i>
Tea-estates areas	3352 (15.37%)	19552(90.55%)
Industrial areas	4133(17.44%)	18707(85.78%)
Floodplain areas	3092(15.19%)	12,820 (85.49%)
Forest areas	2175(14.50%)	17253(84.80%)

Table 2: Correlation between meteorological parameters and abundance of dengue vectors collected from ovitraps placements from different habitats.

Metrological parameters	Ranges	Correlation coefficients					P-value		
		F.A	R.A	I.A	T.A	R.A	F.A	I.A	T.A
Temp _{max-min}	37°C - 8°C	0.91	0.56	0.85	0.91	0.01	0.01	0.01	0.01
Rainfall _{max-min}	484mm-14mm	0.73	-0.19	0.76	0.81	0.05	0.01	0.01	0.01
Relative humidity _{max-min}	90%- 60%	0.25	0.47	0.25	0.29	0.27	0.5	0.21	0.18

Table 3: Linear regression analysis of vector abundance with three different levels of elevations.

Dengue risk zone in upper Brahmaputra valley of Assam	Three different elevations	Standard error	Degree of freedom	Sig.
Forest areas	3ft	33.27	4	0.03
Riverside areas	6ft	37.93	9	0.00
Industrial areas	12ft	31.46	9	0.04
Tea-estates areas				
Dengue endemic zones in lower Brahmaputra valley of Assam	Three different elevations			
Sonapur	3ft	33.27	4	0.03
Dispur	6ft	37.93	9	0.04
Gandhibasti	12ft	31.46	9	0.04
6th mile		33.27	4	0.03

with TPI of 65 ± 1.56 , 63.33 ± 3.21 , 58.33 ± 1.94 and 50 ± 3.30 respectively. In case of monsoon season, tea-estates were found to have the highest TPI of 65 ± 1.76 followed forest, industrial and floodplain riverside areas with TPI of 58.33 ± 2.49 , 50 ± 1.94 and 46.66 ± 1.82 respectively. In post-monsoon season, the highest TPI was recorded from both tea-estates and industrial areas having same TPI of (78.33 ± 2.33) followed floodplain riverside and forest areas with TPI of 55 ± 3.19 and 48.33 ± 1.46 (Table 14). From the ovitrap surveillance, it was found that, industrial areas showed the highest percentage of immature counts of *A. aegypti*, (17.44%) followed by tea-estates, (15.37%), flood-plain riverside, (15.19%) and forest areas, (14.50%). For *A. albopictus*, tea-estates areas showed the highest percentage of *A. albopictus* abundance (90.55%) followed by industrial areas, (85.78%), flood-plain riverside areas, (85.49%) and forest areas, (84.80%) (Figure 2)

The study on correlation co-efficient between three major meteorological parameters, temperature/rainfall/humidity (both min./max.) and dengue vector abundance, revealed all the study sites to be positively correlated with the parameters except the riverside areas (Table 2).

Again, while we considered the effect of ovitraps with three different levels of elevations, 3ft, 6ft and 12ft above ground level in all the four habitat types of upper Brahmaputra valley of Assam along with four dengue

prone zones of capital city of Assam, India that comes under lower Brahmaputra valley of Assam, to get a comparative view of dengue vector abundance, the 3ft height above the ground level showed the highest percentage of positive ovitraps followed by 6ft and 12ft. Among all the study sites Sonapur recorded the maximum percentage of positive ovitraps that were installed in all the three levels of elevations. In the height of 3^{ft}, it was (80%), in 6^{ft} it was (73.68%) and in 12^{ft}, it was (60%). The six mile area showed the lowest percentage of positive ovitraps per ovitrap installed in all the three level of elevations i.e., 28.57%, 14.28% and 0%. From the liner regression analysis of vector abundance with three different levels of elevations, all the study sites showed significant relation with the three different level of heights $p < 0.05$. (Table 3).

The study of water quality parameters was of great importance in determination of *Aedes* vector abundance. From the analysis of three major water quality parameters i.e., pH, TDS and DO. It was found that the *Aedes* vector abundance was highly correlated with the high pH and TDS in study sites. Among the study sites, the highest vector abundance was showed by tea-estates areas i.e. 172.21 ± 3.82 for *A. aegypti* and 814.67 ± 0.98 for *A. albopictus*, which correlated with the highest pH of 7.28 ± 0.07 and TDS of 150.14 ± 2.67 as compared to other study areas followed by industrial with average vector abundance 268.16 ± 1.11 for *A. aegypti* and

Table 4: Average vector abundance (*A. aegypti* and *A. albopictus*) with relation to water quality parameters of Study sites.

Study sites	<i>A. aegypti</i>	<i>A. albopictus</i>	pH	TDS	DO
Tea-estates areas	172.21±3.82	814.67±0.98	7.28±0.07	150.14±2.67	4.02±0.61
Industrial areas	268.16±1.11	779.46±0.99	7.14±0.09	82.67±3.19	4.12±0.84
Floodplain areas	115.13±1.98	718.88±3.56	7.11±0.11	60.81±1.14	4.80±0.43
Forest areas	38.17±2.85	534.17±2.48	7.08±0.14	114.90±3.25	4.20±0.41

Table 5: Significant test analysis of Vector abundance with that of water quality parameters.

	Parameters	N	DF	F
1.	Ph with <i>A. aegypti</i> of all the study sites	24	3	16.63
2.	Ph with <i>A. albopictus</i> of all the study sites	24	3	16.63
3.	TDS with <i>A. aegypti</i> of all the study sites	24	3	25.27
4.	TDS with <i>A. albopictus</i> of all the study sites	24	3	8.47
5.	DO with <i>A. aegypti</i> of all the study sites	24	3	25.27
6.	DO with <i>A. albopictus</i> of all the study sites	24	3	12.98

*The mean difference is significant at 0.05 levels

779.46±0.99 for *A. albopictus* of which correlate with pH7.14±0.09, TDS 82.67±3.19, floodplain riverside with average vector abundance of 115.13±1.98 for *A. aegypti* and 718.88±3.56 for *A. albopictus* which correlated with pH7.11±0.11, TDS60.81±1.14 and forest areas with average vector abundance of 38.17±2.85 for *A. aegypti* and 534.17±2.48 for *A. albopictus* which correlated with pH7.08±0.14, TDS- 114.90±3.25. The dissolved oxygen ranged from 4.02 to 4.80, the highest being recorded in floodplain area. From the study it was found that the water quality ranges of both industrial areas and tea-estates provided more suitable breeding ground for dengue vectors as the vector abundance was found to be the maximum in these two sampling sites (Figure 4), (Table 4). All the water quality parameters were recorded to be statistically significant at ≤0.05 level of significance with that of vector abundance (Table 5). The amplification of the partial mt COI portion of genomic DNA was done by using forward primers of 5- GGATTGGAAATGATAGTTCCIT and reverse primer of 3 AAAATTTAATTCATTGAACAGC primers by using standard PCR protocol and yielded band of approximately size 700bp fragments for both *A. aegypti* and *A. albopictus*.^[20] Further sequencing of both amplicons confirmed that all analyzed individuals belonged to *A. aegypti* and *A. albopictus*. Both the vectors displayed different amplicon size for mt COI gene (Figure 4).

The received rDNA sequences of mt COI gene were probe for identification using BLAST, NCBI so to aligned the sequences of isolates of present study to

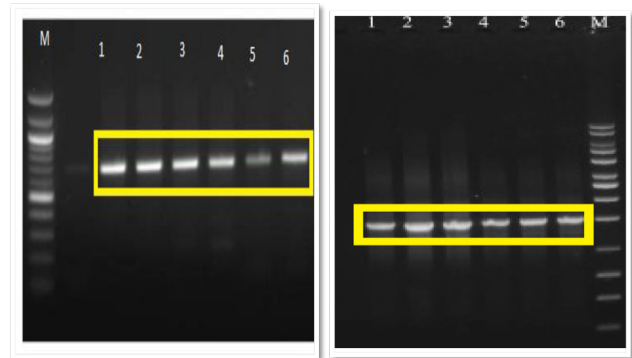


Figure 3: Represents the amplification of mitochondrial COI gene using the specific primers, each lane shows the amplified product of both *A. aegypti* (A) and *A. albopictus* (B) of sampling sites. Approximately 735 base pair with marker.

the similar isolated obtained from already submitted databases in NCBI for construction of phylogenetic tree to determined genetic diversity and evolutionary relationship among the isolates from different habitat types. Phylogenic tree was constructed in two different forms; one was constructed in-between the isolates obtained in present work collected from different sampling sites and one was in between isolates study in present work with that of similar isolates submitted in gene bank database in NCBI. Based on mt COI gene sequences of *A. aegypti*, maximum likelihood tree shows that out of six isolates, two isolates were distinctly separated into two clusters one is Code 5, Guwahati and another one is Code 6, ICMR strains collected from Dibrugarh, Assam) and other four isolated were sub-clustered into two clusters one between Code 1, Industrial areas and Code2, Tea-estates areas and second was in between Code 3, Riverside areas and Code 4, Forest areas and out of six isolates Code 1 and 2 and Code 3 and 4 shares 80% and 96% similarity with one another and shows close proximity with each other whereas Code 5 shares 61% similarity with Code 1 and Code 2 and Code 6 shares 68% similarity with all the four isolates collected from different habitat types for *A. aegypti*.

In *A. albopictus*, similar pattern was observed, out of six isolates, Code 1' and Code 3' were distinctly separated forming separate cluster. Whereas (Code 2' and 5')

and (Code 4' and 6') sub-clustered into two individual cluster. Among the six isolates both (Code 2' and 5') shared 90% and (Code 4' and 6') shared 76% similarity. In second phylogenetic tree analysis between isolates of present study and similar isolates obtained from BLAST result revealed that the isolates of *A. aegypti* shows similar alignment with isolates from two different states and countries i.e., from India (Assam and Maharashtra) and Srilanka, Kenya and Africa respectively. Out of six isolates of *A. aegypti*, four isolates show close proximity with the isolates from Assam obtained from genebank database, NCBI with Accession no. KX227735.1, KX227743.1, KX227739.1, whereas isolates of *A. albopictus* aligned with the isolates from Assam, India, China and Nepal and all the isolates shares maximum similarities with the isolates from China expect Code6' i.e., DRL, Tezpur which shows close proximity with isolates from Assam, India. Molecular phylogenetic analysis also revealed that *A. aegypti* collected from study sites has its origin in African countries while *A. albopictus* has in Asian countries (Figure 4).

DISCUSSION

Owing to human behavior, vector-borne diseases increased manifold worldwide mostly in tropical and sub-tropical countries. One of the important measures for the control of vector-borne diseases lies on the accurate and realistic collection of data through proper monitoring of vector species in disease-prone areas or the areas, which have an equal chance of disease outbreak in the coming years. This helps to increase the rate of success of vector control program. This could be achieved by conducting different vector surveillance methods according to place. The ovitrap surveillance showed the immature stages of *A. albopictus* to be dominant over *A. aegypti*. which clearly indicated that *A. albopictus* shared the same oviposition habitat with *A. aegypti* (Table 1). The finding revealed that *A. albopictus* might use plasticity in choosing oviposition sites for laying eggs in both natural and artificial containers in urbanized habitat. The finding is also supported by report of other workers.^[21] For this reason, a mixed infestation was probably observed in *A. albopictus* is an opportunistic biter which prefers to take human blood over animal blood.^[22] But, its feeding habits vary depending on the region or habitat type from where the mosquito population originates. In this study only the outdoor ovitrap surveillance was preferred to examine in four different habitats. Earlier study in different countries confirmed that, outdoor ovitrap surveillance contain the highest density of mosquito eggs than

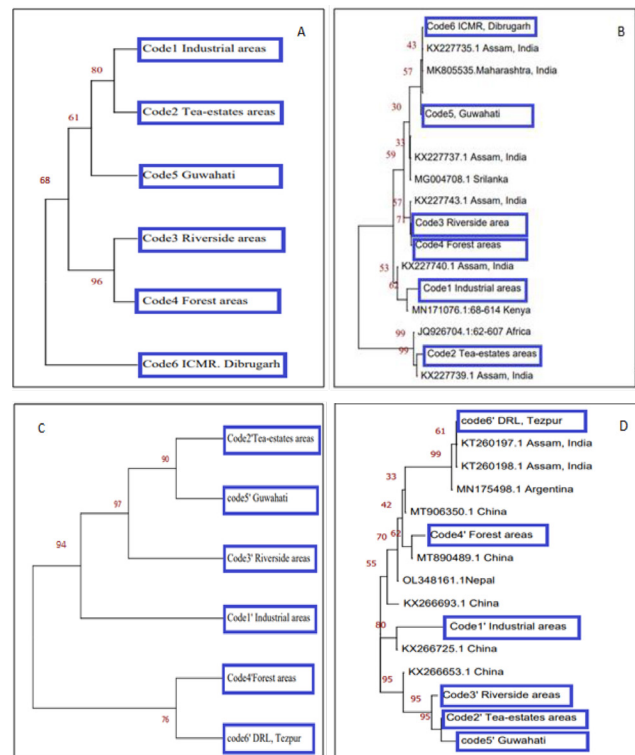


Figure 4: Construction of molecular phylogeny for mitochondrial COI gene of both *A. aegypti* (a and b) and *A. albopictus* (c and d). The evolutionary history was inferred by using the maximum likelihood method based on the Tamura 3-parameter model. The bootstrap consensus tree inferred from 1000 replicates is used to represent the evolutionary history of the taxa analyzed.

indoor ovitraps. That outdoor environment contains higher density of Aedes population was also recorded in our previous study on container surveillance of dengue vectors in and around the housing areas.^[23] Similarly the traditional larval indices surveillance at four villages in Central Java recorded significant outside infestation in flower pots (26 percent) and discarded tyres (53 percent).^[24] Higher than 10% ovitrap index indicates a possible risk of dengue outbreak which was recorded in present study. The effect of three important meteorological parameters, temperature, humidity and rainfall against ovitraps revealed that both temperature and rainfall was a crucial factor in anticipating rises in dengue vector populations.^[25] Rainfall creates containers which results in a high adult population outside of the dwelling houses. The suitable temperature that exists throughout the year adds to the effect. Therefore, in the present study, both temperature and precipitation showed the highest significant correlation with ovitrap indices. In conformity, precipitation increased the number of egg counts of Aedes spp. in Brazil.^[25] Similarly, a research conducted in Italy found that rainfall was significantly correlated with female abundance.^[26] Similar trend was

observed in Yogyakarta, Indonesia by BG-Sentinel trap and found that larval count of *Aedes* spp. significantly correlated with rainfall.[27] In various Asian nations, a correlation between rainfall and temperature and the occurrence of dengue has been documented.[28,29] This finding might be useful for motivating the public health authority to adapt vector control measures to clean up the water holding containers in dengue risk zones to decrease the breeding habitats. From the study of vertical dispersion of *Aedes* spp., it was observed that the correlation between positive ovitrap and larval collection with that of height was less. Due to this reason, a lesser *Aedes* populations is found at heights of high-rise apartments. Study recording percentage of dengue incidence with in relation to height of dwelling house might reveal interesting direction for dengue vector control. Similar study carried in different countries like Malaysia, Singapore observed that *A. aegypti* can take flight much higher than *A. albopictus*. [14] As our study also revealed the same, therefore, further larger-scale studies for understanding vertical dispersal of *Aedes* mosquitoes is recommended which will help to provide clear view of transmission of dengue in near future. There may be greater risk of maximum dispersal of dengue vector to high rise apartment from ground level because of insecticide pressure on breeding surface at ground level and also the human and animal too act as carriers of this vector.[30] Study on correlation of water quality parameters with the ovitrap in different study sites was conducted as most mosquitoes choose their breeding locations based on their desired traits that may allow them to survive and sustain. [31,32] A number of variables that are physical and chemical who can both attract and deter mosquitoes can influence the oviposition behaviour. A certain site situation may be favored by most species, though others might not. A study has revealed that different types of plants and various chemical characteristics of the larval environment in peri domestic areas are associated content of physical and chemical traits that could influence the growth and survival of larvae.[33] The present study strongly indicated that *Aedes* spp. mostly breed in water pH slightly alkaline and TDS in-between 60 to 200 ranges. These ranges were mostly favored by both industrial and tea-estates areas as maximum positive ovitraps along with higher dengue vector abundance were found in these two study sites. Studies showed that *A. albopictus* survived and developed in a variety of habitat such as fresh water, brackish water or any water (clear, turbid or polluted), that were used for drinking or washing purposes as compared to *A. aegypti*. This was proved by the present study also as the

A. albopictus vector abundance was higher than *A. aegypti* in the ovitraps. Therefore as reported by other workers also, *A. albopictus* has greater plasticity of breeding habitat.[34]

DNA-based identification techniques using rDNA region and mt gene COI could overcome the problem of restricted ability of morphological identification methods to distinguish between sibling and closely related species of mosquitoes. Thus, during vector monitoring for arboviral outbreaks like dengue, this approach can be utilized to identify both adult and aquatic stages of the *Aedes* vectors. Results demonstrated a high degree of genetic congruence based on mitochondrial COI gene homology, which is 90% percent between the *Aedes* spp. (Figure 6). Similar finding was observed in previous study in Assam, India.[35]

In the phylogenetic study, both mosquito species used in this investigation are classified separately with rare exceptions and some Indian counterparts different from other regions of the world. Global map created based on the available barcode sequences, shows the geographical distribution of the two vectors. As, the rise in dengue cases in both Dibrugarh and Tinsukia districts of Assam raises important questions regarding the origin and establishment of this species in these areas. Beside the morpho-taxonomic identification, molecular identification of dengue vectors is of great importance in recent times. The challenge of finding and eliminating these mosquitoes from the infested area drove the desire to determine from where this population originated in order to better understand its ecology and a general assessment of how long it has been there. These details help in evaluating the control measures and surveillance requirements. Further, habitat wise molecular analysis of *A. albopictus* and *A. aegypti* is reported for the first time in Assam through this work. From the present study we reiterate the high risk of dengue along with zika and chikungunea in the study sites due to vector abundance. This emphasizes the necessity of a sizable global sequence collection to improve our comprehension of the diversity and dispersion of the mosquito species. Considering the rising incidence of Dengue in India, DNA bar-coding technique can be said to be suitable for understanding the vector mosquito distribution process in vector endemic zones. However, the study of vectorial capacity of the different strains demands equal importance.

CONCLUSION

This study shows ovitrap surveillance as an efficacious less cumbersome tool for studying the habitat wise

population dynamics status of *Aedes* mosquitoes in India. Such study helps in forecasting dengue endemic zones and outbreaks by serving as an early indicator for effective planning of necessary intervention strategies. Molecular phylogeny study has provided original information of biogeographic origin and genetic structure of dengue vector population in the study sites of NE India.

ACKNOWLEDGEMENT

The authors are grateful to the Department of Science and Technology, Govt. of India for funding through project E.M.R./2017/004518 and FIST grant to Dibrugarh University. The authors are indebted to the Malaria departments, Govt. of Assam, and Regional Meteorological Department, Assam.

CONFLICT OF INTEREST

The authors declare that there is no conflict of interest.

ABBREVIATIONS

mt COI: Mitochondrial Cytochrome Oxidase I; **Labs:** Laboratory; **Pvt.:** Private; **Ltd.:** Limited; **OI:** Ovitrap index; **TPI:** Trap positivity index; **DNA:** Deoxyribonucleic acid; **SPSS:** Software platform offers advance statistical analysis; **pH:** Potential of hydrogen; **TDS:** Total dissolved solid; **DO:** Dissolve oxygen; **N.E.:** North east; **PCR:** Polymerize chain reaction; **BLAST:** Basic local alignment search tool; **NCBI:** National centre for biotechnology information; **Ft:** Feet; **Sig.:** Significant; **DRL:** Defence research laboratory; **ICMR:** Indian council of medical research; **Min:** Minimum; **Max:** Maximum.

SUMMARY

From the study of ovitrap surveillance, it was found that immature stages of *A. albopictus* were dominant over the *A. aegypti* in all the study sites. Mixed infestation of both the species in the same ovitrap was recorded. And among the different study sites, tea-estates areas accounted for the highest immature counts. From the study of vector dispersal, 3ft height showed the highest immature counts. The study of vector count with relation to water quality parameters revealed that *Aedes* mosquito prefer to breed in high pH and TDS. Temperature and rainfall showed to be important environmental factors influencing the species abundance. The molecular phylogeny study revealed intra species divergences and threw light on biogeographic origin of the species.

REFERENCES

- Messina JP, Brady OJ, Golding N, Kraemer MUG, Wint GRW, Ray SE, *et al.* The current and future global distribution and population at risk of dengue. *NatMicrobiol.* 2019;4(9):1508-15. doi: 10.1038/s41564-019-0476-8, PMID 31182801.
- Mutheneeni SR, Morse AP, Caminade C, Upadhyayula SM. Dengue burden in India: recent trends and importance of climatic parameters. *Emerg Microbes Infect.* 2017;6(8):e70. doi: 10.1038/emi.2017.57, PMID 28790459.
- Adams B, Kapan DD. Man bites mosquito: understanding the contribution of human movement to vector-borne disease dynamics. *PLOS ONE.* 2009; 4(8):e6763. doi: 10.1371/journal.pone.0006763, PMID 19707544.
- Chen LH, Wilson ME. Dengue and chikungunya infections in travelers. *Curr Opin Infect Dis.* 2010;23(5):438-44. doi: 10.1097/QCO.0b013e32833c1d16, PMID 20581669.
- Gould EA, Solomon T. Pathogenic flaviviruses. *The Lancet.* 2008;371(9611):500-9. doi: 10.1016/S0140-6736(08)60238-X.
- Gubler DJ. Epidemic dengue/dengue hemorrhagic fever as a public health, social and economic problem in the 21st century. *Trends Microbiol.* 2002;10(2):100-3. doi: 10.1016/S0966-842X(01)02288-0, PMID 11827812.
- Murhekar M, Joshua V, Kanagasabai K, Shete V, Ravi M, Ramachandran R. Epidemiology of dengue fever in India, based on laboratory surveillance data, 2014-2017. *Int J Infect Dis.* 2019;84S:S10-4.
- World Health Organization. Comprehensive guideline for prevention and control of dengue and dengue haemorrhagic fever; 2011. Available from: <https://apps.who.int/iris/handle/10665/204894>.
- Focks DA. A review of entomological sampling methods and indicators for dengue vector (No. TDR/IDE/DEN/03.1). World Health Organization; 2004. Available from: https://apps.who.int/iris/bitstream/handle/10665/68575/TDR_IDE_DEN_03.1.
- Suroso T. Dengue haemorrhagic fever in Indonesia epidemiological trend and development of control policy. World Health Organization; 1996. Available from: <https://apps.who.int/iris/bitstream/handle/10665/147883/dbv20p35>.
- Kusriastuti R, Suroso T, Nalim S, Kusumadi W. 2004. Together picket. Community activities in dengue source reduction in Purwokerto City, Central Java, Indonesia. *Dengue.*
- Nurrochmawati I, Dharmawan R. Biological, physical, social, and environmental factors associated with dengue haemorrhagic fever in Nganjuk, East Java. *J Epidemiol Public Health.* 2017;2(2):93-105.
- Garjito TA, Hidajat MC, Kinansi RR, Setyaningsih R, Anggraeni YM, Mujiyanto, *et al.* Stegomyia Indices and Risk of Dengue Transmission: a Lack of Correlation. *Front Public Health.* 2020;8:328. doi: 10.3389/fpubh.2020.00328, PMID32793541.
- Lie w C, Curtis CF. Horizontal and vertical dispersal of dengue vector mosquitoes, *Aedes aegypti* and *Aedes albopictus*, in Singapore. *Med Vet Entomol.* 2004;18(4):351-60. doi: 10.1111/j.0269-283X.2004.00517.x, PMID 15642001.
- Ooi EE, Goh KT, Gubler DJ. Dengue prevention and 35 years of vector control in Singapore. *Emerg Infect Dis.* 2006; 12(6):887-93. doi: 10.3201/10.3201/eid1206.051210, PMID 16707042.
- Ritchie SA, Long S, Smith G, Pyke A, Knox TB. Entomological investigations in a focus of dengue transmission in Cairns, Queensland, Australia, by using the sticky ovitraps. *J Med Entomol.* 2004;41(1):1-4. doi: 10.1603/0022-2585-41.1.1, PMID14989339.
- Rozilawati H, Tanaselvi K, Nazni WA, Mohd Masri S, Zairi J, Adanan CR, *et al.* Surveillance of *Aedes albopictus* Skuse breeding preference in selected dengue outbreak localities, peninsular Malaysia. *Trop Biomed.* 2015;32(1):49-64. PMID25801254.
- Wijegunawardana NDAD, Gunawardene YINS, Chandrasena TGAN, Dassanayake RS, Udayanga NWBAL, Abeyewickreme W. Evaluation of the effects of *Aedes* vector indices and climatic factors on dengue incidence in Gampaha District, Sri Lanka. *BioMed Res Int.* 2019;2019:2950216. doi: 10.1155/2019/2950216, PMID30834259.
- Tyagi BK, Munirathinam A, Venkatesh A. A catalogue of Indian mosquitoes. *Int J Mosq Res.* 2015;2(2):50-97.
- Chan A, Chiang LP, Hapuarachchi HC, Tan CH, Pang SC, Lee R, *et al.* DNA barcoding: complementing morphological identification of mosquito species

- in Singapore. *Parasit Vectors*. 2014; 7(1):569. doi: 10.1186/s13071-014-0569-4, PMID 25498759.
21. Paupy C, Ollomo B, Kamgang B, Moutailler S, Rousset D, Demanou M, *et al*. Comparative role of *Aedes albopictus* and *Aedes aegypti* in the emergence of Dengue and chikungunya in central Africa. *Vector Borne Zoonotic Dis*. 2010;10(3):259-66. doi: 10.1089/vbz.2009.0005, PMID19725769.
 22. Delatte H, Paupy C, Dehecq JS, Thiria J, Failloux AB, Fontenille D. *Aedes albopictus*, vector of chikungunya and dengue viruses in Reunion Island: biology and control. *Parasite*. 2008;15(1):3-13. doi: 10.1051/parasite/2008151003, PMID18416242.
 23. Borah H, Bora DS. Ecological and social determinants of *Aedes aegypti* and *Aedes albopictus* larval habitat in north-eastern India. *Int mosq res*. 2022;9(1):47-55. doi: <https://doi.org/10.22271/23487941.2022.v9.ila.580>
 24. Wijayanti SP, Sunaryo S, Suprihatin S, McFarlane M, Rainey SM, Dietrich I, *et al*. Dengue in Java, Indonesia: relevance of mosquito indices as risk predictors. *PLOS Negl Trop Dis*. 2016;10(3):e0004500. doi: 10.1371/journal.pntd.0004500, PMID26967524.
 25. Pessanha JE, Brandão ST, Almeida MC, Cunha MD, Sonoda IV, Bessa AM. Ovitrap surveillance as dengue epidemic predictor. *J Health Biol Sci*. 2014;2(2):51-6. doi: 10.12662/2317-3076jhbs.v2i2.54.p51-56.2014.
 26. Roiz D, Rosà R, Arnoldi D, Rizzoli A. Effects of temperature and rainfall on the activity and dynamics of host-seeking *Aedes albopictus* females in northern Italy. *Vector Borne Zoonotic Dis*. 2010;10(8):811-6. doi: 10.1089/vbz.2009.0098, PMID20059318.
 27. Tantowijoyo W, Arguni E, Johnson P, Budiwati N, Nurhayati PI, Fitriana I, *et al*. Spatial and temporal variation in *Aedes aegypti* and *Aedes albopictus* (Diptera: Culicidae) numbers in the Yogyakarta area of Java, Indonesia, with implications for Wolbachia releases. *J Med Entomol*. 2016;53(1):188-98. doi: 10.1093/jme/tjv180, PMID26576934.
 28. Wu HH, Wang CY, Teng HJ, Lin C, Lu LC, Jian SW, *et al*. A dengue vector surveillance by human population-stratified ovitrap survey for *Aedes* (Diptera: Culicidae) adult and egg collections in high dengue risk areas of Taiwan. *J Med Entomol*. 2013;50(2):261-9. doi: 10.1603/me11263, PMID23540112.
 29. Hii YL, Zhu H, Ng N, Ng LC, Rocklöv J. Forecast of dengue incidence using temperature and rainfall. *PLOS Negl Trop Dis*. 2012;6(11):e1908. doi: 10.1371/journal.pntd.0001908, PMID23209852.
 30. Tinker ME. *Aedes aegypti* larva habitats in Surinam. *BullPan Am Health Organ*. 1974;8(4):293-301. PMID 4441730.
 31. Gubler DJ, Reiter P, Ebi KL, Yap W, Nasci R, Patz JA. Climate variability and change in the United States: potential impacts on vector-and rodent borne diseases. *Environ Health Perspect*. 2001;109(S2):223-33. doi: 10.1289/ehp.109-1240669, PMID 11359689.
 32. Kenawy MA, Ammar SE. Physico-chemical characteristics of the mosquito breeding water in two urban areas of Cairo Governorate, Egypt on commercial use. *J Entomol Acarol Res*. 2013;45(12):96-9.
 33. Romeo A, Victoria O, Marcelo DM, Sol F, Solari S, Hernán G. Modeling the complex hatching and development of *Aedes aegypti* in temperate climates. *EcolModell*. 2013;253(4):44-55.
 34. Lalithanjale AD, Dilani DR. Vector mosquito diversity and habitat variation in a semi urbanized area of Kelaniya in Sri Lanka. *IntJEntomolRes*. 2014; 01:15-21.
 35. Soni M, Bhattacharjee CK, Khan SA, Dutta P. DNA bar coding as a complementary approach for species identification from dengue endemic regions of North East India. *IntJMosqRes*. 2018;5(1):46-52.

Cite this article: Borah H and Bora DS. Study on Ovitrap Surveillance and Molecular Phylogeny of Dengue Vectors (*Aedes aegypti* and *Aedes albopictus*) based on Cytochrome C Oxidase Subunit I (COI) Genes from Different Habitat Types of North Eastern, India. *Asian J Biol Life Sci*. 2023;12(1):151-9.